

The
Queenswoodz
@ BUKIT JALIL



Rooted in Strength,
Crowned in Elegance





Where Grace Reigns and Roots Run Deep

At The Queenswoodz, we believe a name should evoke more than identity - it should embody spirit. "Queens" speaks to timeless grace, quiet authority, and feminine refinement. "Woodz," with its earthy resonance, grounds that elegance in strength, resilience, and a deep connection to nature. Together, the name reflects a poetic synergy - a realm where elegance meets endurance, and legacy is nurtured by rooted beauty. The Queenswoodz is more than a name; it is a story of sanctuary, power, and poetic duality.

At the international skiing competi
held in harsh winter conditions
from various countries
of different distances.
and challenging track
test for the partici
winners exhibi
preparation
from i
specta





Artist's Impression

consec
od tinc
t. Ut wa
ullam
quat. L
velit er
dolore eu fe
illa facilis a
odio dignissim qui blandit praesen
duis d



A Symphony of Strength and Softness

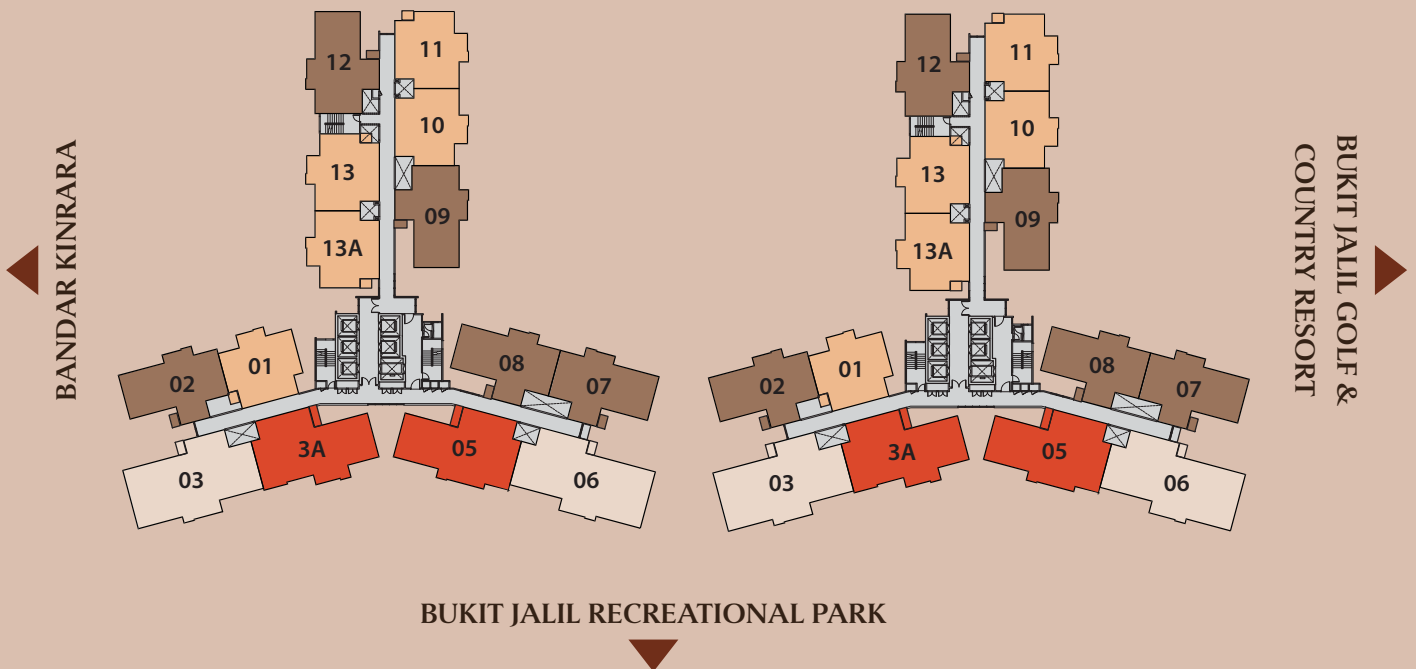
Guided by the philosophy of “The Feminine Sensuality to a Masculine Legacy,” The Queenswoodz emerges as a bold yet serene residential haven. Architectural elements draw from both flowing curves and strong vertical lines - marrying boldness with intimacy, structure with soul. Stone, wood, and metal are complemented by warm tones, curated textures, and natural light, crafting spaces that feel grounding yet uplifting. This is not just a place to reside; it is a living environment that honours balance, inspires presence, and whispers elegance into every detail.

Floor Plans

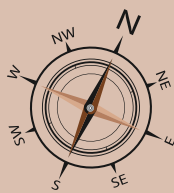
▲
OUG / KL CITY

TOWER A

TOWER B

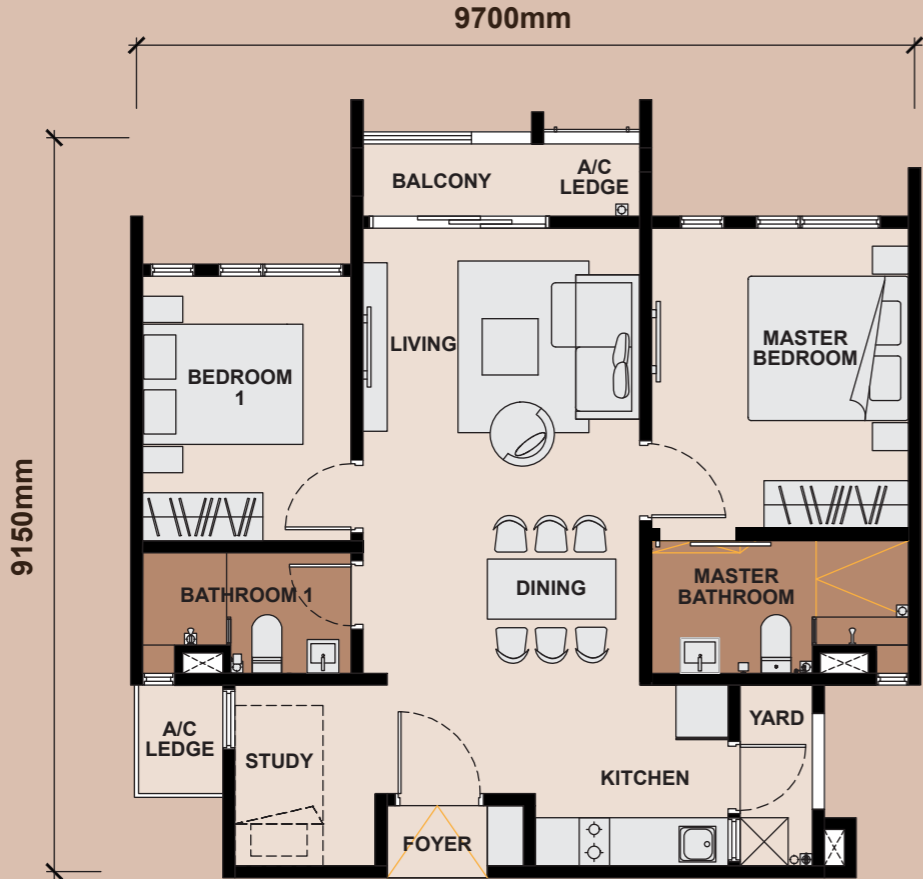


■ Type A1/A2 ■ Type B1/B2 ■ Type C1/C2 ■ Type D1/D2

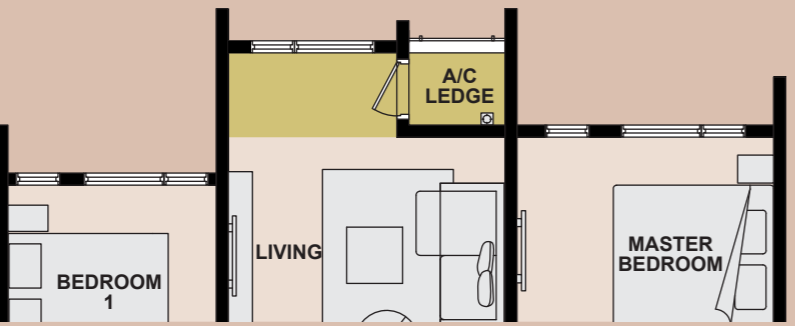


Unit Plans

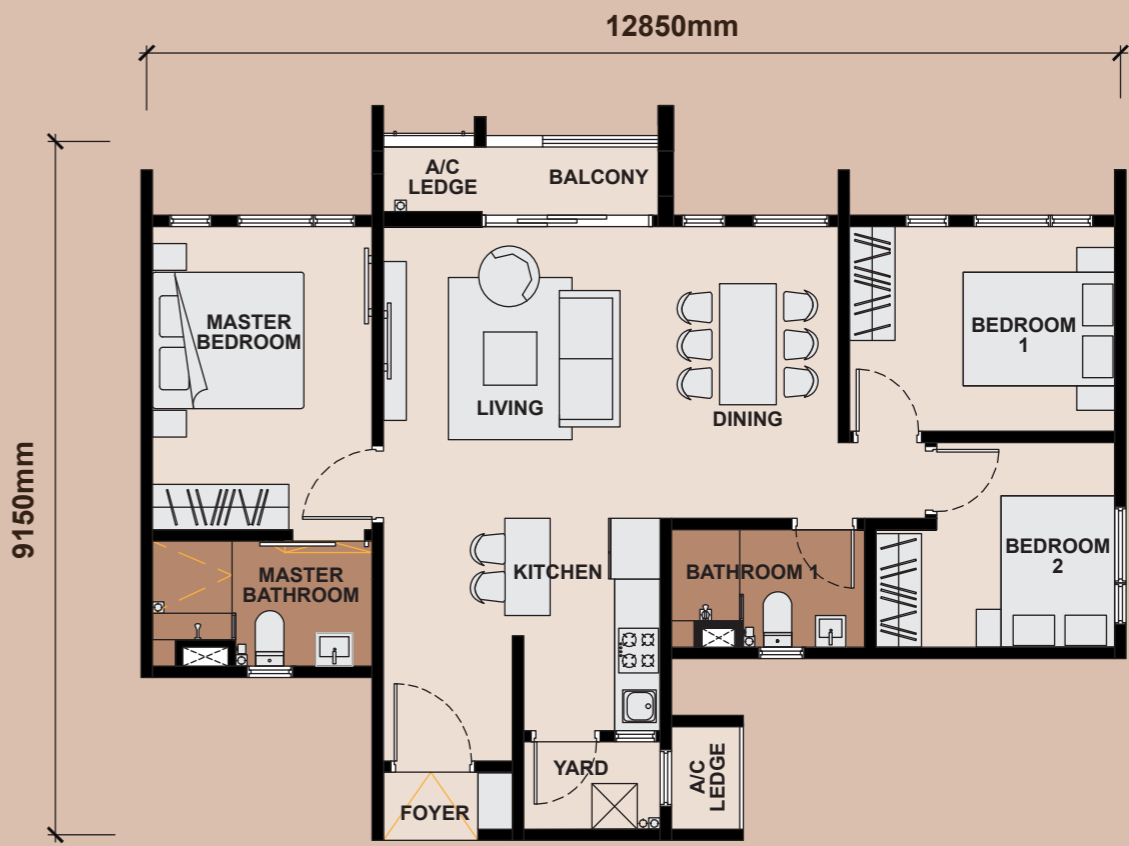
TYPE A1 (BALCONY)
807 SQ.FT. | 75 SM | 2+1R 2B



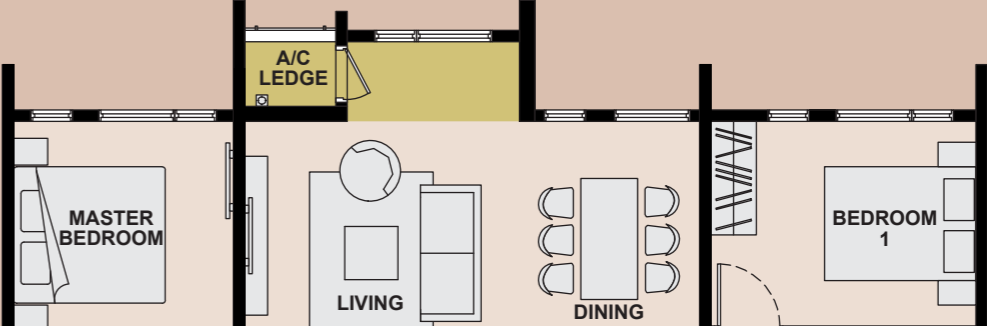
**TYPE A2
(WITHOUT BALCONY)**



TYPE B1 (BALCONY)
936 SQ.FT. | 87 SM | 3R 2B

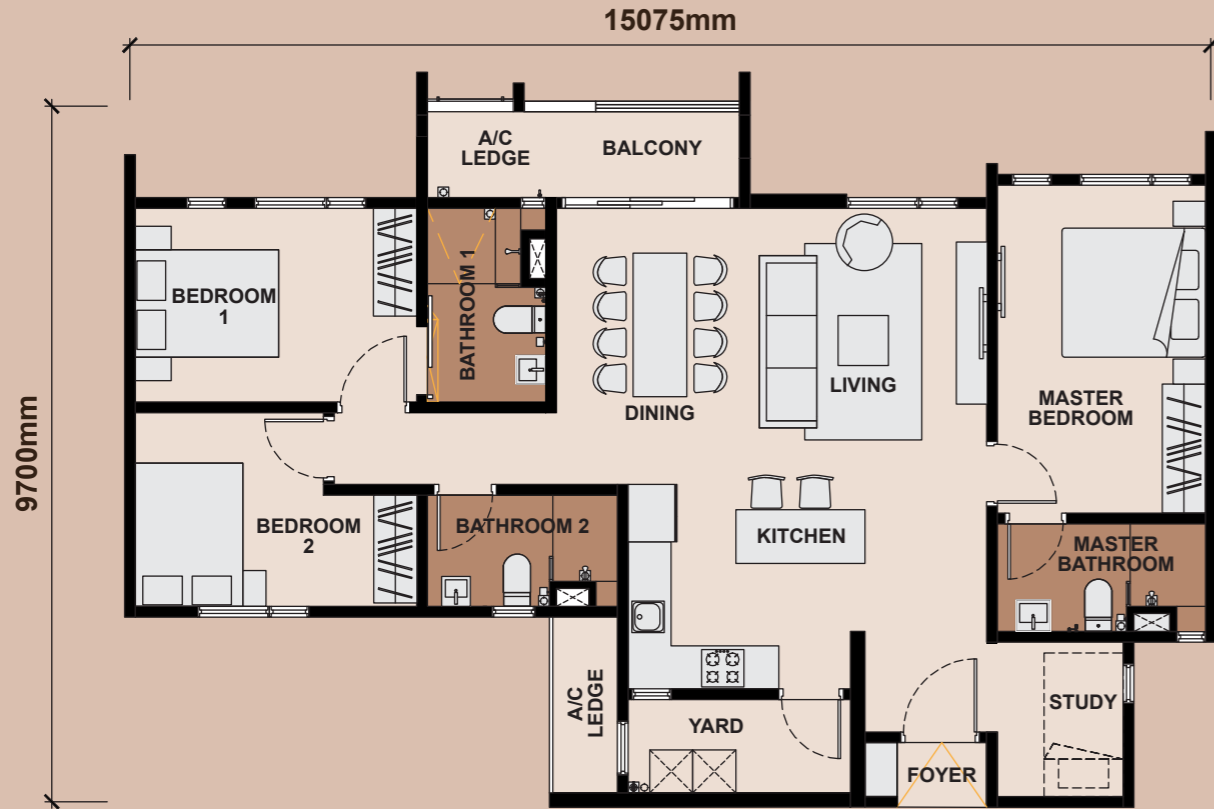


**TYPE B2
(WITHOUT BALCONY)**



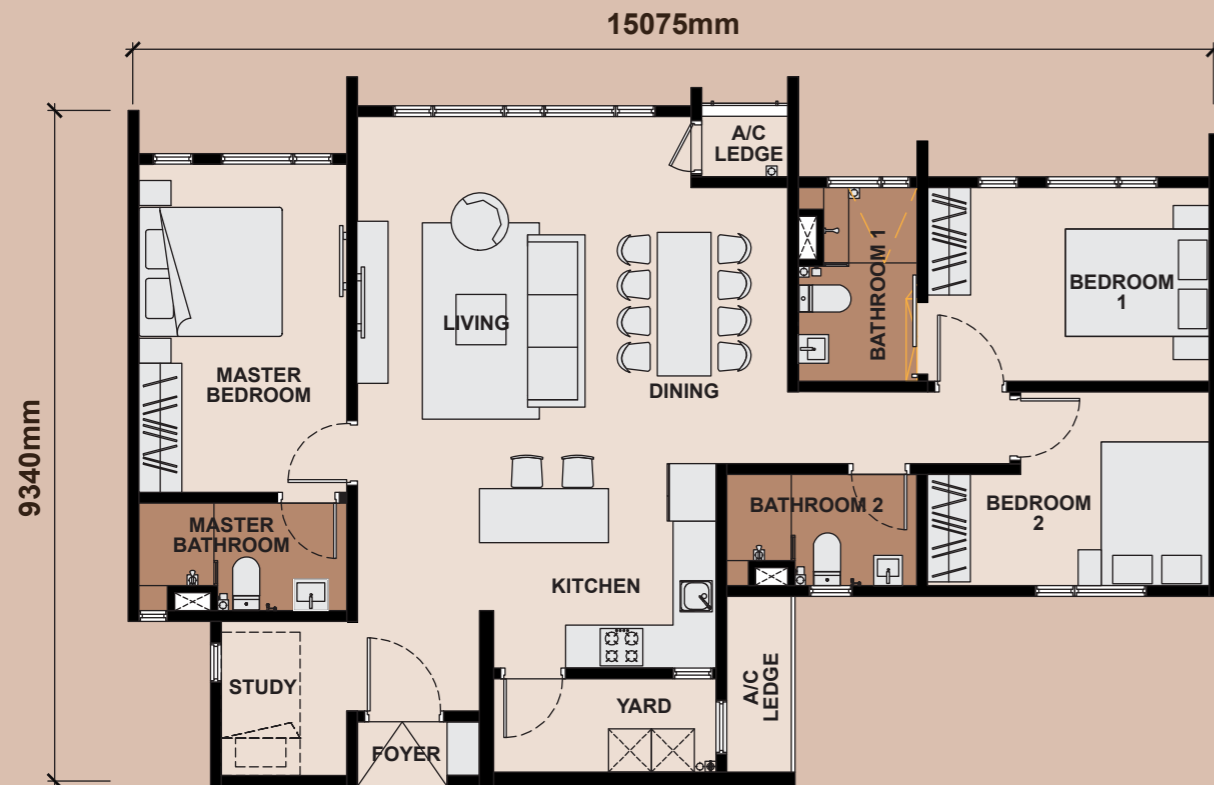
TYPE C1

1206 SQ.FT. | 112 SM | 3+1R 3B



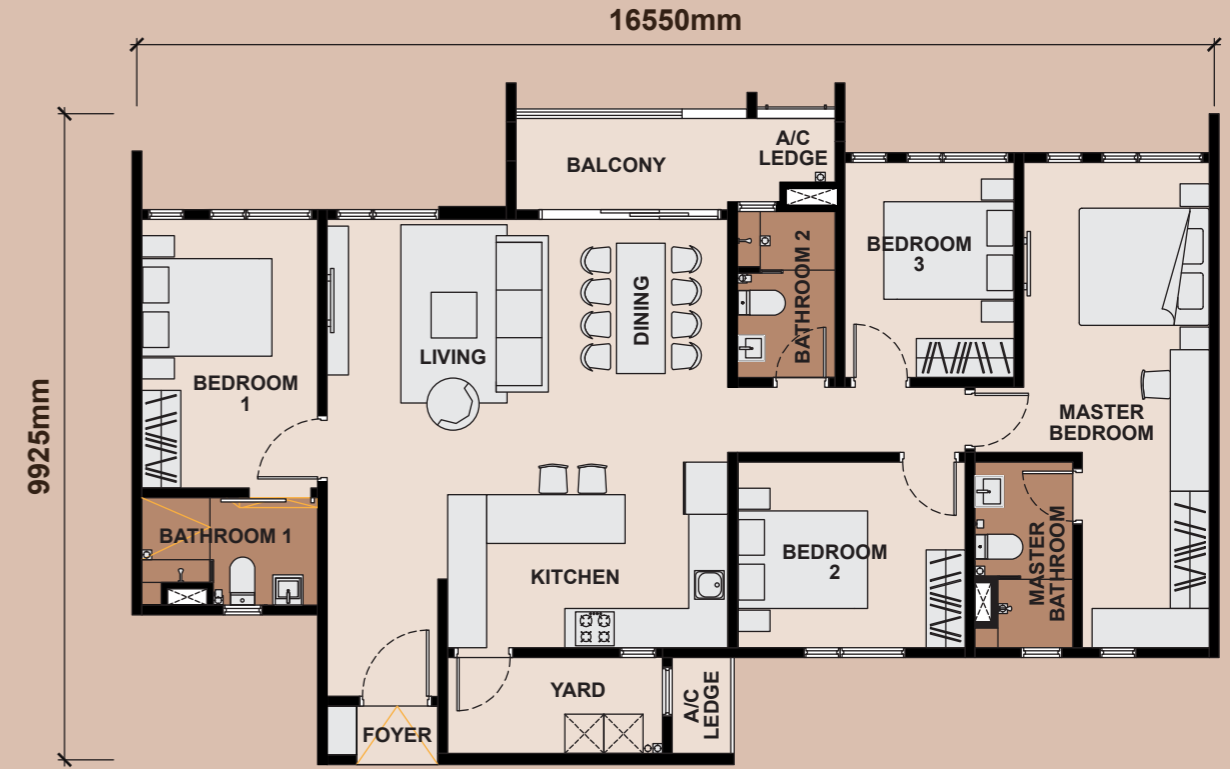
TYPE C2

1206 SQ.FT. | 112 SM | 3+1R 3B



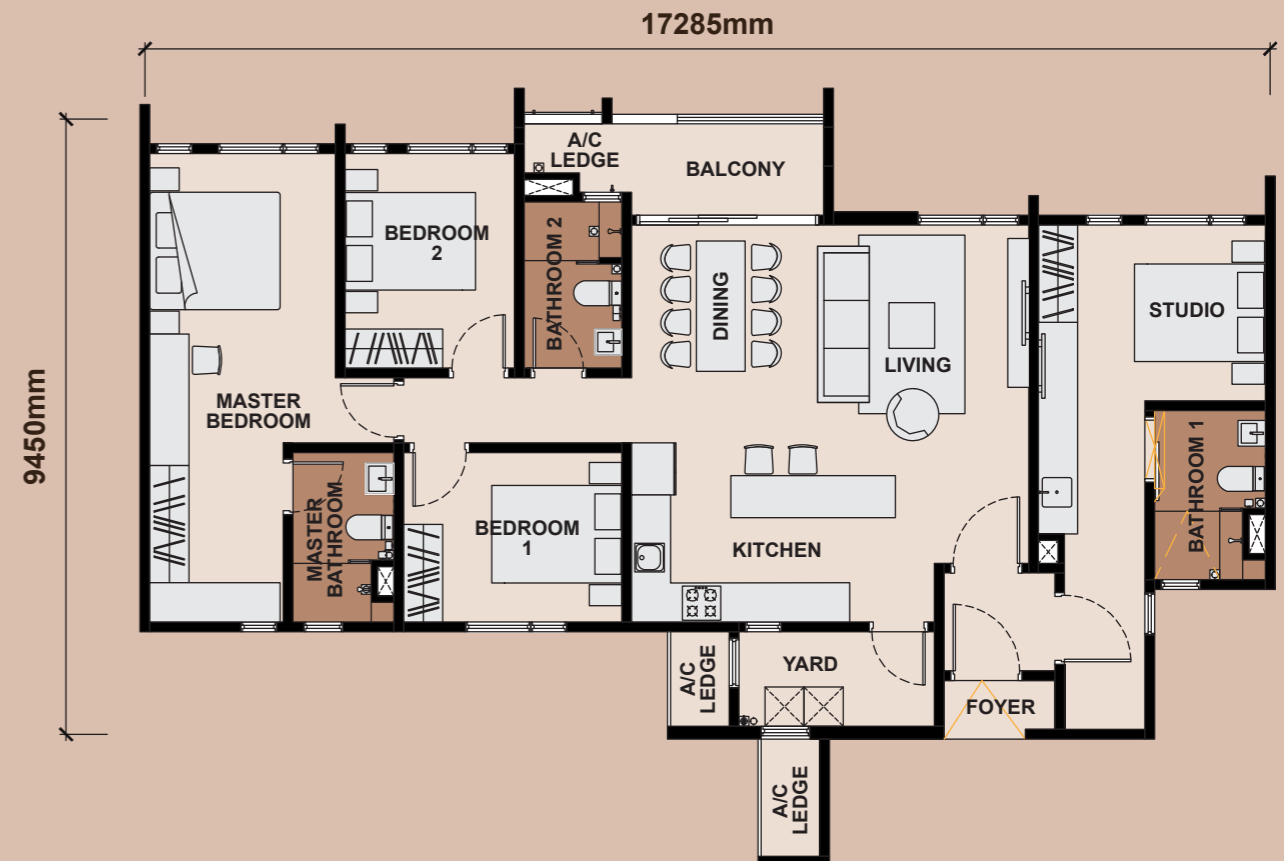
TYPE D1

1410 SQ.FT. | 131 SM | 4R 3B



TYPE D2 (DUAL KEY)

1410 SQ.FT. | 131 SM | 3+1R 3B



A Home of Heritage, A Life of Harmony



The Queenswoodz @ Bukit Jalil is not just a residential development - it is a legacy in the making. A home that honours tradition while embracing modernity, where every detail is designed to resonate with the harmony of masculine structure and feminine grace. It invites you to not just live, but to dwell deeply—in beauty, balance, and belonging.



  **EXSIM MILLERZ SQUARE SALES GALLERY**

G-08, Ground Floor, Megan Legasi,
No. 357, Jalan Kelang Lama,
58000 Kuala Lumpur.

T: 03-2779 2570 **W:** vividz.com.my
M: 012 - 766 0919

EXSIM BUKIT JALIL CITY SDN. BHD.

[Registration No. 201401009297 (1368455-U)]

D-35-01, Level 35, EXSIM Tower,
Millerz Square @ Old Klang Road, Megan Legasi,
No. 357, Jalan Kelang Lama, 58000 Kuala Lumpur.

T: 03 7963 1999 **E:** info@exsim.com.my
W: exsim.com.my

All information, items and/or products herein contained and/or displayed, including but not limited to measurement, features, materials, specifications, brands, colours, plans, drawings, images, pictures, visuals renditions, illustrations and presentation of interiors, furniture and fittings layout, landscapes, roads, access, lifestyle, scale models, show units and/or development are artist's impressions/renderings for illustration purposes only and are subject to change as may be required and/or recommended by the relevant authorities and/or the developer's architects, engineers and/or consultants without prior notification to you. Nothing contained herein shall be taken as identical representation of the actual state thereof or constitute or be construed to constitute an offer, a contract, part of the sale and purchase agreement (SPA), a representation and/or warranty on the part of the developer, unless expressly and specifically incorporated in the SPA. Prospective purchasers are advised to read and scrutinize the SPA together with its enclosures or to engage relevant independent professionals for advice prior to signing of the SPA. The developer and/or other related companies and parties shall neither be held responsible for any claims, error or inaccuracy nor be liable for any losses, damages, costs, expenses, or liabilities that may be incurred, suffered or sustained resulting from any reliance on any information, items and/or products herein contained and/or displayed or any part thereof.